

Ideen aus der Praxis!

MEIER-BRAKENBERG

Weighing Bars

Assembly instructions

WAES



MEIER-BRAKENBERG GmbH & Co. KG
Brakenberg 29 • 32699 Extertal
Tel: +49(0)52 62/993 99-0 • Fax: +49(0)52 62/993 993
E-Mail: info@meier-brakenberg.de
Internet: www.meier-brakenberg.de

Einweicheanlagen • Desinfektion • Tierwaagen • Intensivreinigung • Hochdruckreiniger • Stallkühlung • Tränkeanlagen

Table Of Contents

TABLE OF CONTENTS	1
INSTRUCTION FOR MOBILE AND STATIONARY WEIGHING MACHINES	2
ROUTE OUT FUNCTION (ONLY TYPE: WA08) FEHLER! TEXTMARKE NICHT DEFINIERT.	3
FRONT PANEL OVERVIEW	5
BATTERIES	6
BACKLIGHT SETTINGS	7
WEIGH METHODS	7
OPERATION	8
OPTIONAL SETTINGS	9
CALIBRATING SCALE USING	10
SETTING OPTIONS	11
WEIGHING ERRORS	12
TROUBLESHOOTING	13
BOTTOM PANEL CONNECTIONS	14
EC-DECLARATION OF CONFIRM	15


All rights reserved. Reproduction of any part of this manual in any form whatsoever without MEIER-BRAKENBERG's express written permission is forbidden. The contents of this manual are subject to change without notice. All efforts have been made to assure the accuracy of the contents of this manual. However, should any errors be detected, MEIER-BRAKENBERG would greatly appreciate being informed of them. The above notwithstanding, MEIER-BRAKENBERG can assume no responsibility for errors in this manual or their consequence.

USE OF MEIER-BRAKENBERG WEIGHING BARS

Weighing bars of MEIER-BRAKENBERG are exclusively intended for installation on weighing cages and platforms for weighing pigs and sheep. Max. weight load of stainless steel weighing bars is 4,000 kgs. Installation and operation must only be carried out by trained personnel!

Electronic assemblies are pre-adjusted for weighing fatteners. Settings do not require any adjustment. The weighing machine is ready-to-operate. Changes of settings should only be carried out on basis of the instruction manual. Adjustments might be reasonable for determining the exact weight of static goods. When using rechargeable batteries make sure that the batteries are fully charged before initial use. The power status of the accumulator is shown on the display. An arrow points at the imprint "Akku" in case of necessary recharging. The charge level is displayed in % when the device is switched on.

Frequent recharging, e.g. after each use, decreases service life of storage batteries. The so-called „memory effect“ increasingly reduces the usage time! Switch off display after use. Continuing operation in spite of unstable display and operation of display after weighing leads to total discharge and destruction of storage battery.

For weighing animals retain all pre-set values according to base settings of the operating manual. Do not carry out any adjustments. For zero setting of weighing machine push  button at least for 3 seconds until display shows ,0'.

Cleaning of weighing bars: Bars can be washed off with water. For reasons of quality protection the display including cables and weighing bars should not be directly exposed to high pressure cleaning. Clean display with damp cloth.

Note: No welding work at the device or in immediate vicinity. Welding may damage electronic assemblies. Welding work is only permitted after complete dismantling of display and weighing bars. The operation of electronic assembly is permitted only in compliance with the provided instruction manual.

Note: We can also manufacture other types of mobile or stationary weighing machines in various sizes and designs. Please call us!

Scope of delivery: 4 x weighing bars, 1 x display, 1 x power supply unit

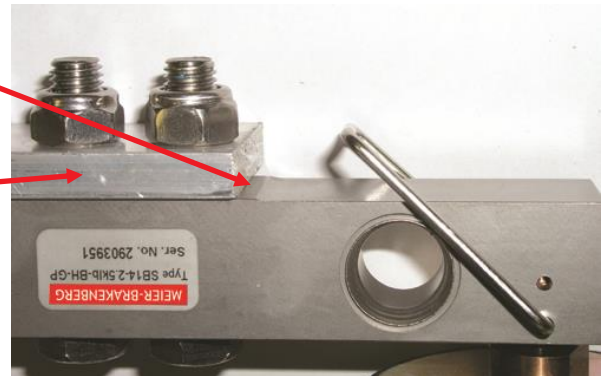
Mounting on support system

- With recess for the weighing stand the weighing bar can be installed either underneath (see picture 2) or on top of the weighing machine profile. In any case ensure that the weighing cell is firmly fixed.
- The rubber pad of each weighing bar must face downwards to the floor as they are used as pedestals for the weighing machine.



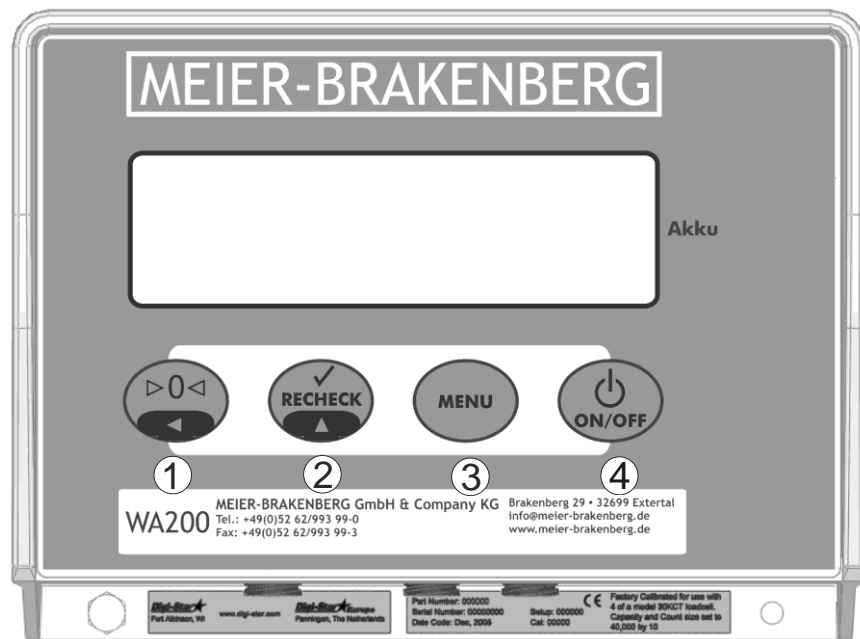
picture 2





- Installation and contact with the weighing machine support must not exceed the marked edge.
- Should the profile cover all the length of the weighing bar it is necessary to use suitable shims or washers (not in the picture) between weighing bar and the weighing machine profile. The part at the right side of the base must neither touch the floor nor the support system because that would adversely affect the weighing results.



picture 3

Front Panel Overview



- ①  – press and hold to zero balance.
- ②  – reweigh if scale is locked on.
- ③  – press and hold for setup menu.
- ④  – turns indicator on/off.
- ⑤ Display Window – Displays current weight or action.

Batteries

- Use AA Batteries
- Insert batteries negative (-) end first.
- Batteries are not necessary if using an AC power adapter.

Rechargeable Batteries

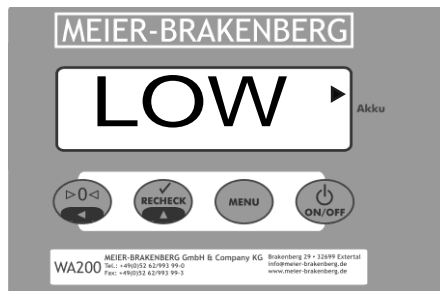
- Rechargeable batteries may be used.
- Rechargeable batteries will show a lower charge level when fully charged.
- The SW300 does not charge batteries.

Battery Life

- Percent of remaining battery life is displayed at power-up.
- To extend battery life, select a lower backlight level or OFF. See instructions below.

Low Battery Indication

- Low Battery message and arrow is displayed when battery low.
- Rechargeable batteries may cause low battery indication to appear earlier than necessary.



BATTERY LIFE

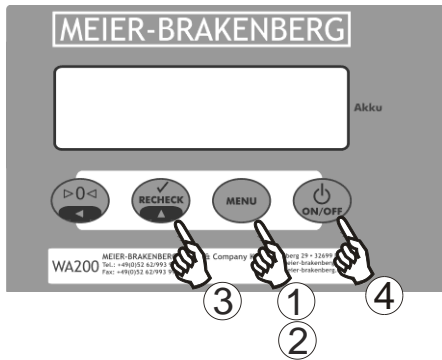
BAKLIT	Estimated Operating Battery Life (Hours)
OFF	40-60
TIME 3	30-55
ON 3	25-45
ON 5	8-16

Backlight Settings

The Backlight can be set of one of the following settings. When set to TIME, the backlight turns off ten seconds after the last key-press.

OFF	ON 1
TIME 1	ON 2
TIME 2	ON 3
TIME 3	ON 4
TIME 4	ON 5
TIME 5	

CHANGE THE BACKLIGHT SETTING



1. Press and hold **MENU** for 3 seconds (ZTRACK is shown).
2. Press **MENU** repeatedly until BAKLIT is shown. The current backlight setting will be displayed.
3. Press **RECHECK** repeatedly until the desired setting is displayed.
4. Press **ON/OFF** to save the setting.

Weigh Methods

Select "Lock On" for animal weighing. Use "General" for general weighing.

GENERAL WEIGH METHOD

All purpose weigh method for weighing stable loads. It does not "Lock On" the weight.

LOCK-ON WEIGH METHOD

Weighs active animals and displays stable accurate weight. Lock-On sensitivity is adjusted using "LOCKON" menu (See Pg 11).

- Scale "Locks-On" to weight.
- Weight is displayed stable, even if motion never stops.
- Small 'L' appears on left side of display indicating weight is "Locked-On".
- Animal's weight must be greater than 0.67% of scales "capacity" (CAP) before system can "Lock-On".

Example: If "CAP" = 4000, 27 or more is required for scale to lock-on.

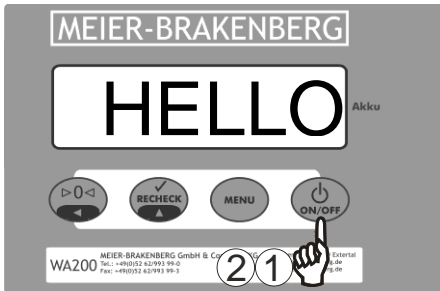
Note: Use a weight value for Zero Tracking (ZTRACK) that is less than 0.67% of capacity.



To break lock, add or remove WEIGHT FROM SCALE PLATFORM. The default setting is 50%.

- The weight value that is used to "break the lock" and return to normal weighing can be selected by choosing a value from 01 to 99%. (See Pg 11) For example, if unlock is set to 10(%) and weight is locked at 1000, display will "unlock" and return to normal weighing at 900, once 10% (100) is removed.
- "Locked-On" weight can be "rechecked", press **RECHECK**. this breaks "lock" and scale recalculates weight.

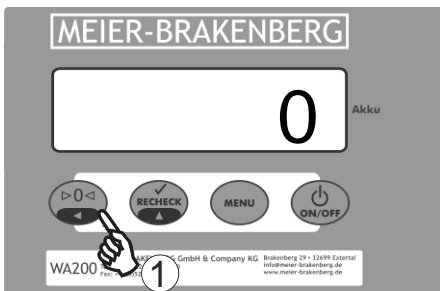
Operation

TURN ON INDICATOR



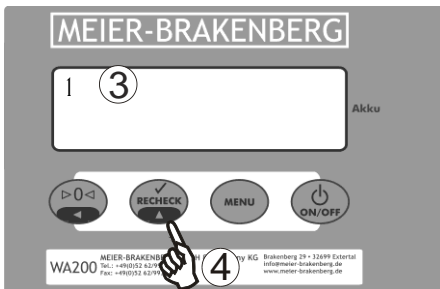
1. Press .
2. To turn "OFF" press and hold .


ZERO BALANCE INDICATOR



1. Press and hold  to zero balance the indicator.

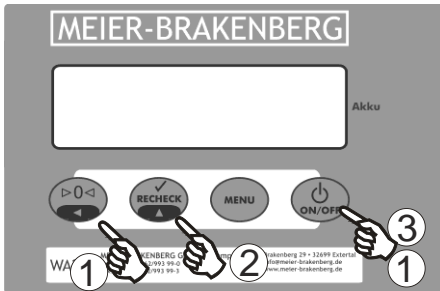
WEIGHING ANIMALS







2. Place animal on platform.
3. "L" on the left side of the display indicates that the weight is "Locked-On".
4. Press  while animal is on scale to "re-weigh" the animal.

Optional Settings

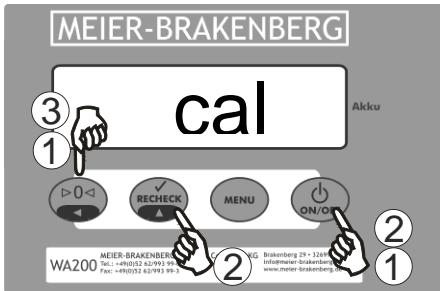
LOAD CELL SETUP



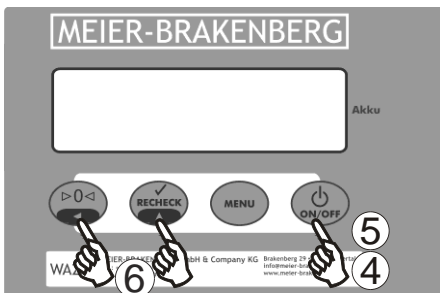
5. Press and hold  and  at the same time until *setup* is shown.
2. Press  to advance through selections
3. Press  to save.

	Description	CAP
3300LB	AnimalWeigh 1496 (kilograms)	4,000
6600LB	AnimalWeigh 2993 (kilograms)	7,000
SB4 LB	AnimalWeigh 566 (kilograms)	10,000
10K LB	AnimalWeigh 4535 (kilograms)	10,000
14K LB	AnimalWeigh 6350 (kilograms)	15,000
3300KG	AnimalWeigh 3300 (kilograms)	1,999
6600KG	AnimalWeigh 6600 (kilograms)	2,999
SB4 KG	AnimalWeigh 1250 (kilograms)	5,000
10K KG	AnimalWeigh 10000 (kilograms)	5,000
14K KG	AnimalWeigh 14000 (kilograms)	6,999
Other	Other load cell (Use Dead Weight Cal.)	_____

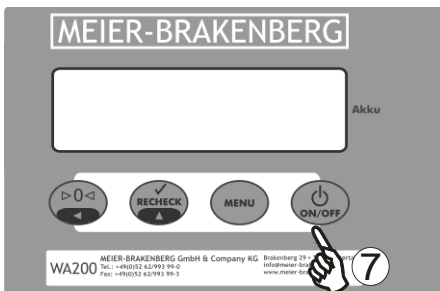
Calibrating Scale Using KNOWN WEIGHTS



1. Press and hold and at the same time to enter setup menu.
2. Press repeatedly to scroll down to OTHER and press .
3. Press to zero balance the scale.

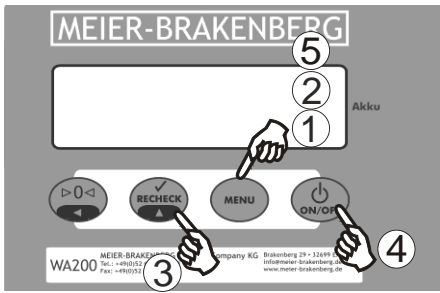


4. Then press .
5. Add a known weight and press .
6. Change displayed weight by pressing to change value of "flashing" digit and press key to select which digit of display is flashing.



7. When display reads correct weight, press to store calibration value.

Setting Options



1. Press and hold **MENU** for 3 seconds.
2. Press **MENU** repeatedly until desired menu shows.
3. Press **RECHECK** to change setting.
4. Press **ON/OFF** to save setting and advance to next menu.
5. Press **MENU** repeatedly until indicator returns to weighing mode to exit.

Setting/ Display	Options (Bold = Default)	Description
Zero Tracking (ZTRACK)	1-99/OFF 03	Adjusts to zero for build-up of snow, mud and manure. Weight value can be set from 1 to 99 lbs/kgs or OFF (00).
Weigh Method (W MTHD)	GENERAL, LOCK	Select weigh method.
Lock-On (LOCKON)	0.50, 0.75, 1.00, 1.25, 1.50 , 1.75, 2.0, 5.0, 10.0	Higher value will lock on quicker but sacrifice accuracy. Use lowest setting that will consistently lock-on to the same weight for a restless animal.
Unlock	01-99(50%)	The percent of weight required to break the lock and return to normal weighing.
Lock-N-Hold (LKNHLD)	ON/OFF	Holds "Lock-On" weight Restarts when next animal steps on.
Auto Off (AUTOFF)	15,30,45,60 , OFF	Indicator shuts "OFF" after set period of inactivity.
Display Count (COUNT)	.01,.02,.05,.1,.2,.5, 1,2,5,10,20, 50,100	Select display count size (resolution) of scale.
Auto-Range (ARANGE)	ON/OFF	Scale increases display count size for weights over 300 again at 600 lbs/kgs.
Display Unit (LB-KG)	LB/KG	When changing weight unit calibration adjusted so scale displays accurately in new display unit
Capacity (CAP)	1496	Enter maximum weight measurable
Span (SPAN)	75%-125% 100%	Displayed weight value can be adjusted by increasing or decreasing the SPAN percentage.

Setting/ Display	Options (Bold = Default)	Description
Back Light (BCKLIT)	OFF TIME 1 TIME 2 TIME 3 TIME 4 TIME 5 ON 1 ON 2 ON 3 ON 4 ON 5	Backlight Intensity, see page 7.

Weighing Errors

Over Capacity Limit (OVRCAP)

- Weight on scale exceeds capacity limit. Capacity value is entered in SETUP to warn of overloading.

Over Range (+RANGE)

- The display shows message "+RANGE" if weight on scale system exceeds maximum weight measurable by scale system.

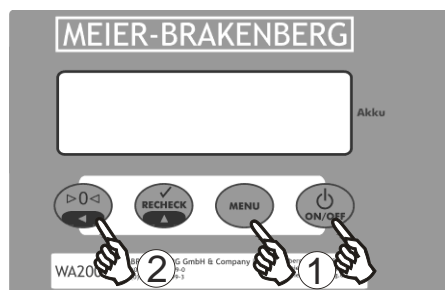
Under Range (-RANGE)

- Display shows message "-RANGE" if weight on scale system is less than minimum weight measurable by scale system.

• SELF TEST

Displays diagnostic tests to aid in troubleshooting.

- Shows battery level
- Shows load cell setup
- Tests display segments
- Shows program ID
- Allows key test



3

4

5 1. Press and within three seconds

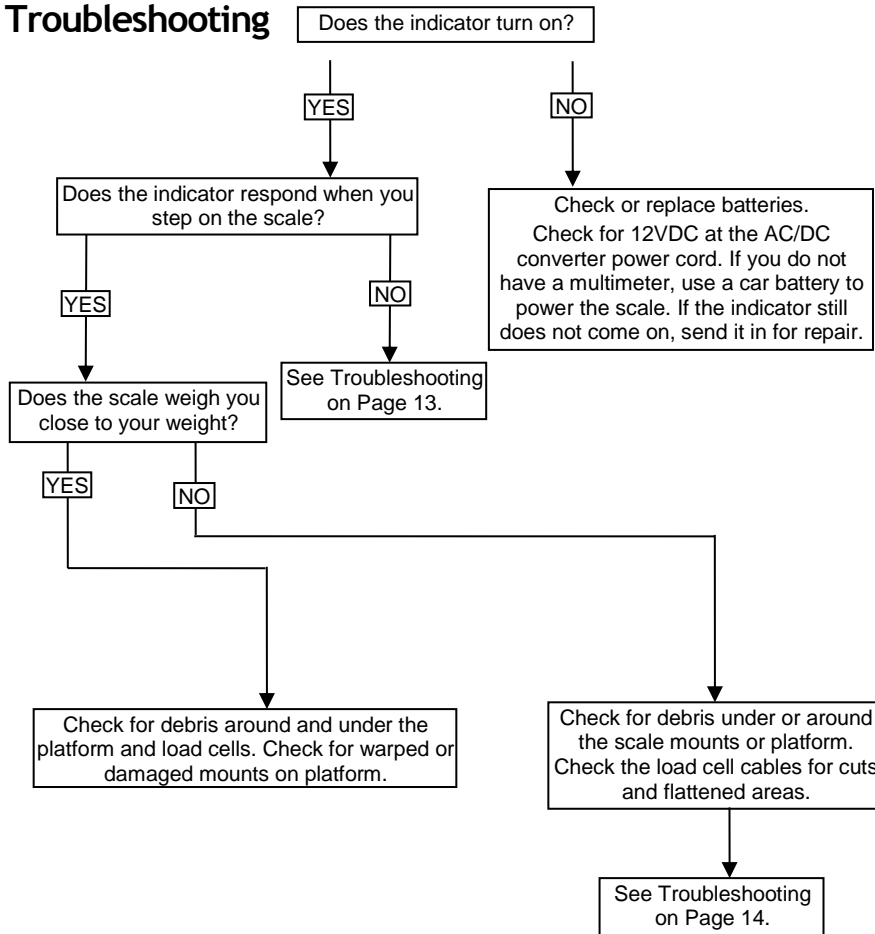
6 press to start self test.

7 2. Press to exit test.

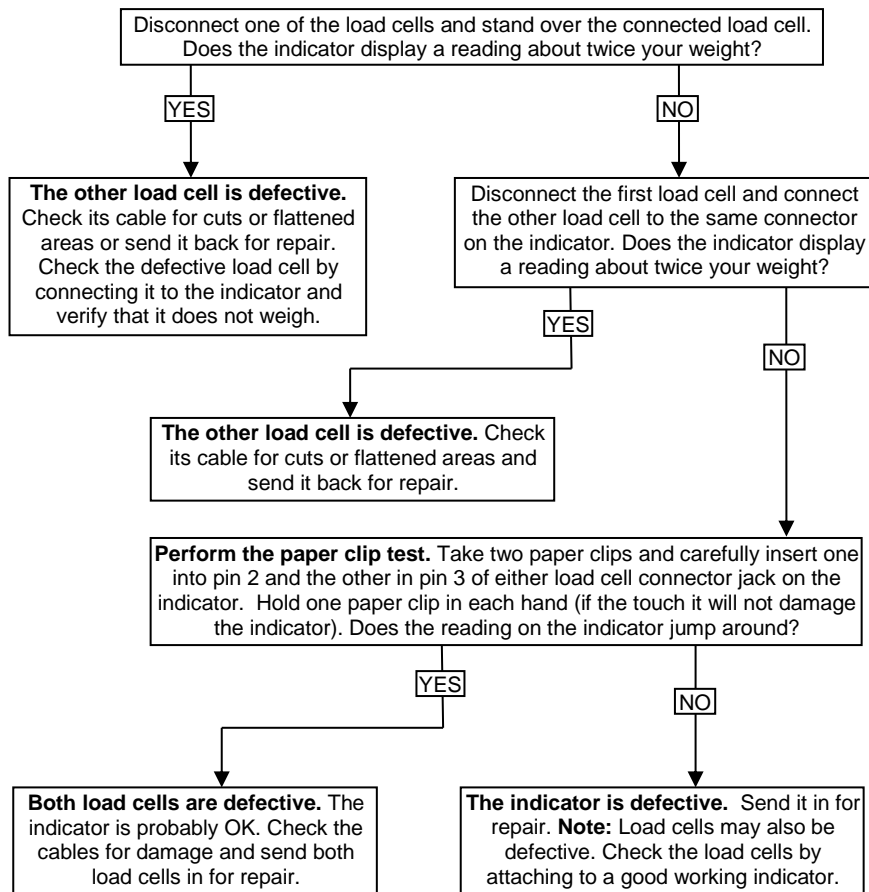
8

1
2

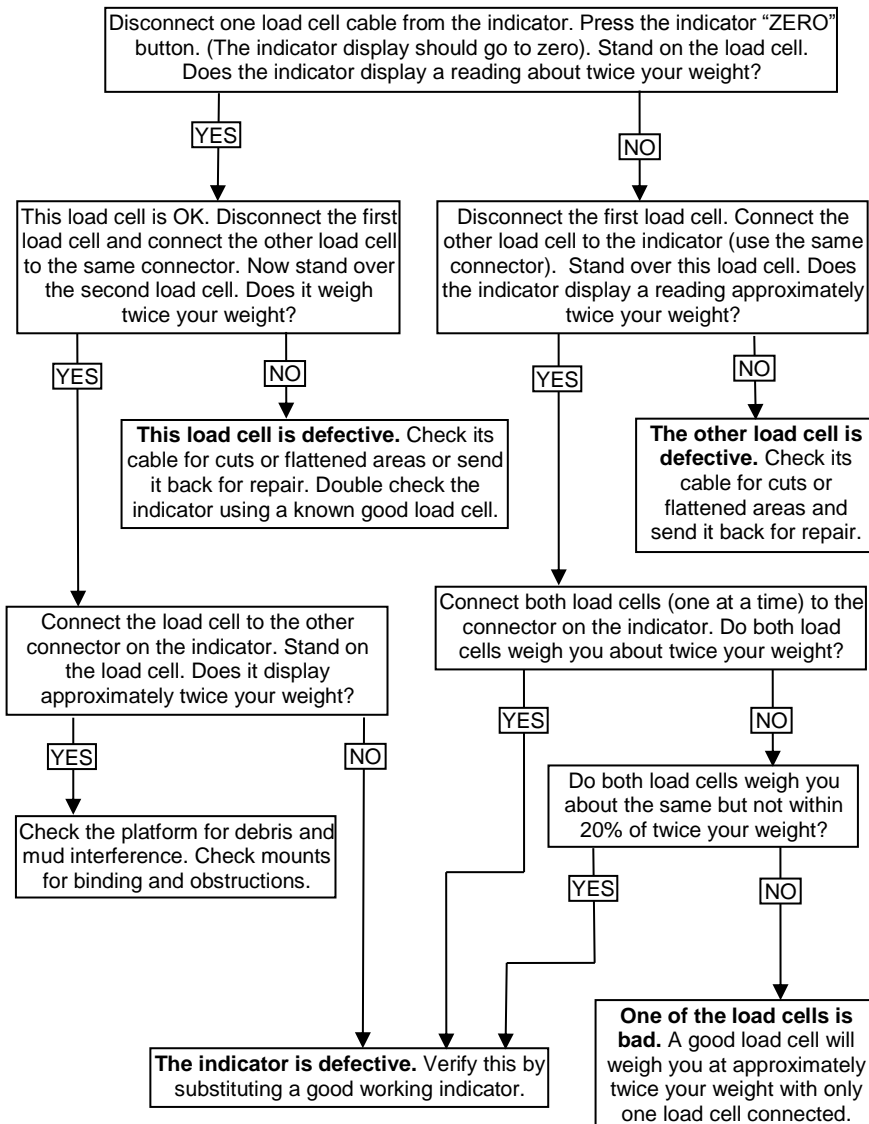
Troubleshooting



Indicator Does Not Respond When You Step on the Scale



The Scale Weighs Close to Your Weight



Bottom Panel Connections

The bottom panel has a battery holder, a power connection and load cell connections.

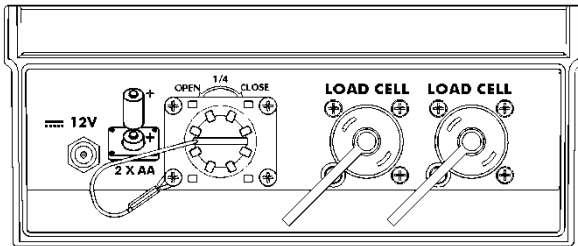
Three different load cell connection configurations are available:

- Two load cell connectors (for use with J-Box or Load cells with connectors).
- Two liquid-tight connectors (for use with two bare-wire load cell cables)
- Two dual liquid-tight connectors (for use with up to four bare wire load cell cables)

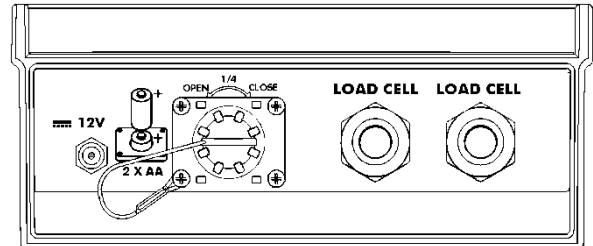
Power Connection

Use only the 12 Volt AC-DC converter supplied with your WA200.

SW300 W/ Load Cell Connectors

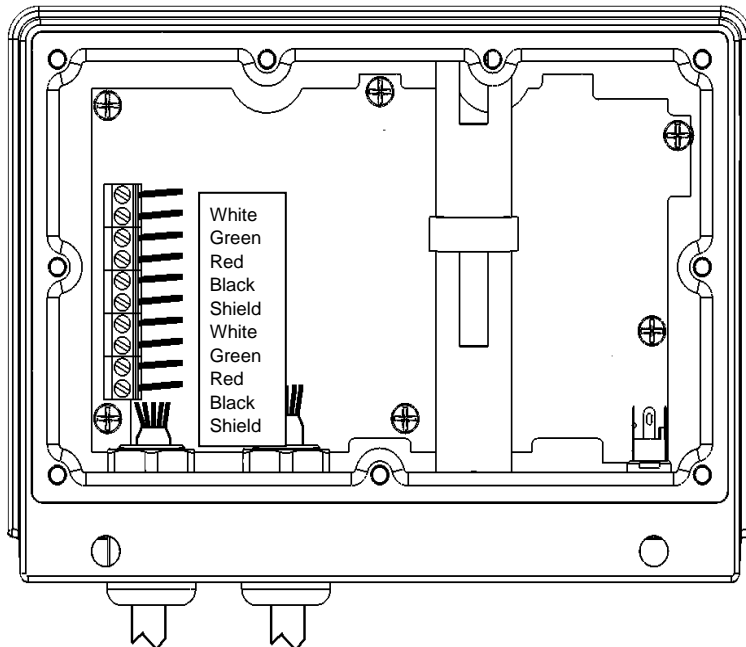


WA200 W/Liquid Tight Fittings



Connecting Load Cell Wires in Indicator

- Remove the back cover (nine screws)
- Feed the load cell wires in through the liquid-tight connectors
- Connect one wire to each terminal as shown
- Install the back cover (nine screws)



EC-DECLARATION OF CONFORMITY

Used guideline(s):

2004/108/EEG

Name of producer:

Meier-Brakenberg

Address of producer:

Brakenberg 29

32699 Extertal

GERMANY

Product name: WA200

Observe: - EN 61326: electronic measuring-, control- administration- and laboratory-hardware (see report number 307285)

- EN 55011, class B: industrial, scientific and medical high-frequency hardware (ISM) (see report number 307285)

Type/Usage: - Electronic weighing systems

- Not for retail trade

- For agricultural, commercial and industrial Use

I'm, the subscriber, declare that the described product achieve the above-mentioned guidelines.

Managing Director



Signature



Signature

Name: Wolfgang Meier, Marc Piechnik

Function: Managing Director

Place: Brakenberg, Germany

Datum: 1. August 2008